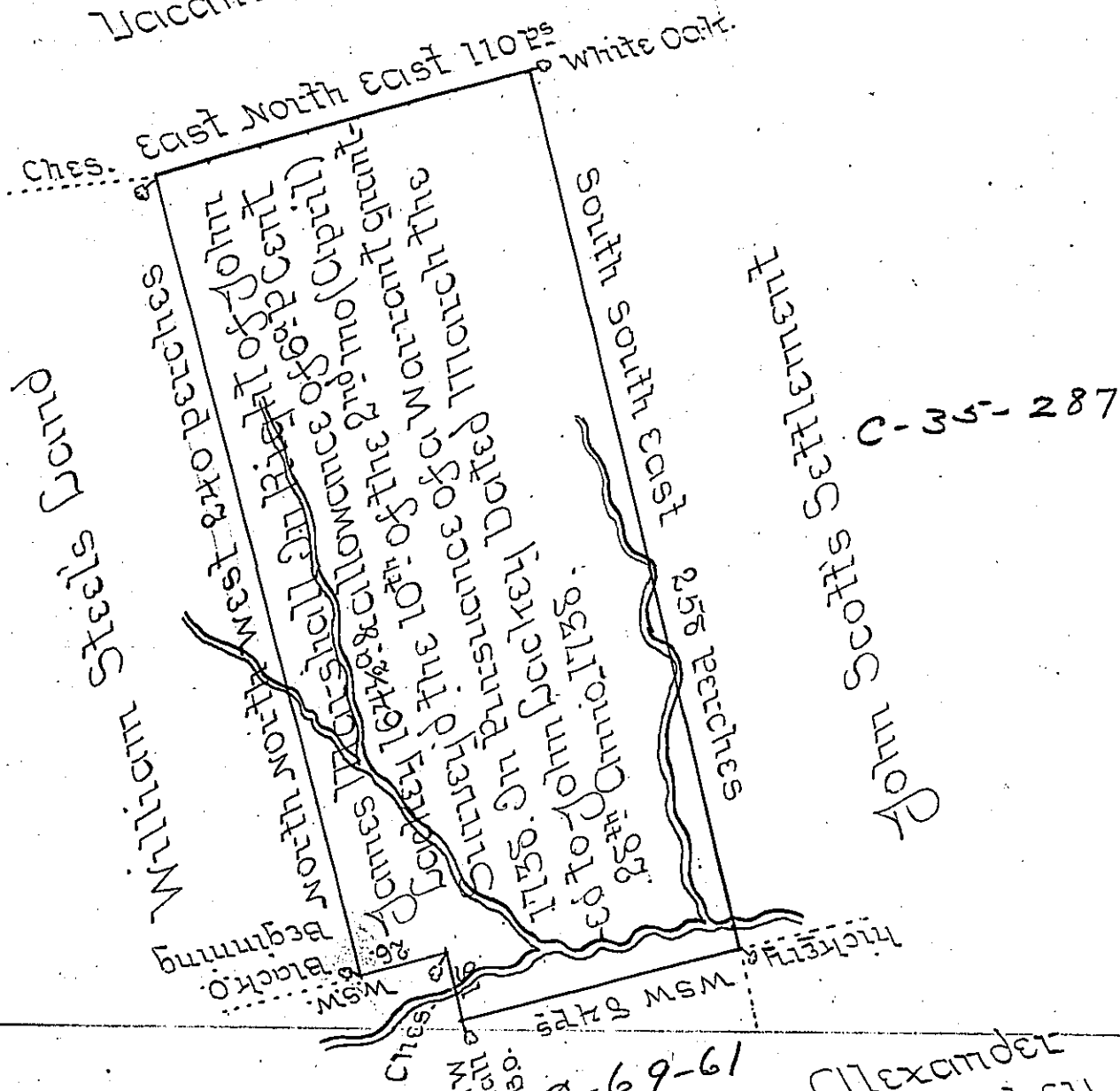


A-53-45  
Vacant Land

A-53-59



C-35-287

C-69-61

Alexander Lackey

John Gray's Survey

The above described Survey was made by John Churchman to John Lackey, is situate on waters running into the Western Branch of Octoraro in Drumore Now P. Lancaster County; Begins at Black Oak Corner of William Steel's Survey & runs thence by the same North North West 240 P to a marked Chesnut tree &c according to the Draught above Certified P

Scale 60 P = 1 Inch

George Churchman

IN TESTIMONY that the above is a copy of the original remaining on file in the Department of Internal Affairs of Pennsylvania, made conformably to an Act of Assembly approved the 16th day of February, 1833, I have hereunto set my Hand and caused the Seal of said Department to be affixed at Harrisburg, this twenty ninth day of August 1905.

*[Signature]*  
Secretary of Internal Affairs.